

SEARCH FOR EDITOR-IN-CHIEF IEEE REVIEWS IN BIOMEDICAL ENGINEERING

IEEE REVIEWS IN BIOMEDICAL ENGINEERING

A PUBLICATION OF THE IEEE ENGINEERING IN MEDICINE AND BIOLOGY SOCIETY



TECHNICALLY COSPONSORED BY
THE IEEE CIRCUITS AND SYSTEMS SOCIETY
THE IEEE COMMUNICATIONS SOCIETY
THE IEEE CONSUMER ELECTRONICS SOCIETY
THE IEEE SIGNAL PROCESSING SOCIETY
THE IEEE ULTRASONICS, FERROELECTRONICS, AND FREQUENCY CONTROL SOCIETY

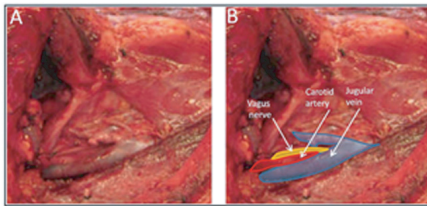


2013

VOLUME 6

IRBECCO

(ISSN 1937-3333)



Nerves, vessels and muscles are not easily differentiated from one another with white light reflectance imaging. Intraoperative view of a lymph node dissection in a patient's neck, showing that large blood vessels and nerve structures are difficult to differentiate from surrounding muscle with white-light reflectance alone (A). The carotid artery (red), jugular vein (blue) and vagus nerve (yellow) are highlighted in the schematic (B). The vagus nerve is a few millimeters across and represents the largest scale nerve that surgeons identify. The smallest nerves that surgeons must identify are less than a millimeter in diameter.

"Fluorescence Imaging in Surgery," by R. K. Otsuka, et al., on page 179.



The *IEEE Engineering in Medicine and Biology Society (EMBS)* is undertaking a search for Editor-In-Chief for *IEEE Reviews of Biomedical Engineering*. R-BME contains reviews of the state-of-the-art and trends in the emerging field of biomedical engineering. This includes scholarly works, ranging from historic and modern development in biomedical engineering to the life sciences and medicine enabled by technologies covered by the various IEEE societies.

The Editor-in-Chief position is for a three-year term and is renewable for an additional three years. The term of appointment would start January 2016. At the time of appointment, the successful applicant must be a member of the IEEE EMBS.

Successful candidates are expected to demonstrate the scientific vision needed for advancing the quality and prestige of the journal, as well as the editorial experience to raise the journal's intellectual stature, breadth of content and impact. The ideal candidate should be a well-known leader who is highly knowledgeable of a broad range of the diverse sub-areas, as well as the emerging developments, in the field of biomedical engineering.

Nominations and applications will be accepted until a suitable candidate is selected. Review of applications by the Search Committee will commence in **September 2015** and conclude by **November 2015**.

Nominations/applications should include the following in electronic format (pdf):

- Goals and strategy for improving intellectual quality, scientific impact and visibility of R-BME.
- A brief synopsis of the candidate's expertise in technical editing along with subject areas.
- A detailed curriculum vitae.

For full consideration, please send the requested information electronically to the EMBS Executive Director by **15 October 2015**. Further questions may be directed to **Scott Woodhouse**, Staff Administration Search Committee using the email address below.



Telephone: +1 732 562 2670
Facsimile: +1 732 465 6435
E-mail: embeditorsearch@ieee.org
Website: <http://www.embs.org>

